

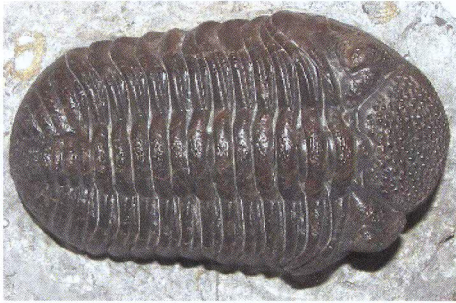
## Club Safety Rules

1. The trip leader and all officers of NCFC have the authority to refuse entry or request anyone to leave a site if they break any of the following rules, or otherwise engage in any dangerous or unethical behavior.
2. Be sure you have permission to collect at any site.
3. Sign up for each NCFC Club Trip that you attend. Notify the trip leader if you must cancel. Do not invite or bring guests. Arrive at the appointed time (not significantly early or late) and do not stay beyond the prescribed quitting time. Notify the trip leader when you leave.
4. Hard-hats and steel-toed boots (or the equivalent) must be worn in any quarry.
5. Safety glasses or goggles must be worn when breaking or sawing rock.
6. A dust mask must be used when using a rock saw. Rock saws may only be used by persons familiar with their operation.
7. Remember that we are guests at each site. Obey all regulations and policies of quarry personnel, whether mentioned here or not. Collect and park in designated areas only.
8. Never collect near vertical walls, overhangs, edges of cliffs, unstable shelves, or any other dangerous areas, whether posted or not. Be aware of those above and below you, to avoid accidents from falling rocks.
9. Stay away from all wires, plastic devices, and other items that could be remains of explosives or detonators.
10. Stay away from all quarry machinery and vehicles, whether moving or not.
11. Leave each site as you found it. Gates should be left open or closed according to how they were found, unless otherwise directed by quarry personnel. Litter and garbage should be removed. Check that you have all tools you brought along. A lost chisel or hammer can cause extensive damage to quarry equipment.
12. Please keep a close eye on any children present, especially your own.
13. During club trips, no pets are permitted at any quarry, whether in a vehicle or not. At public sites, pets must be leashed or in a vehicle, and be closely watched by their owners.
14. Notify the trip leader or an officer of the club if you see any questionable or dangerous activity.
15. Be careful where you reach. Snakes, spiders, or insects may be lurking below or between rocks.
16. When in doubt about any activity, err on the side of safety and caution.



North Coast Fossil Club  
PO Box 44  
Perry, Ohio 44081-0044

*Address Correction Requested*



# North Coast Fossil Club

Cleveland, Ohio



**NORTH COAST FOSSIL CLUB**



*Like Fossils?  
Interested in Prehistoric Life?*

*Explore with us!*

**[www.ncfclub.org](http://www.ncfclub.org)**

